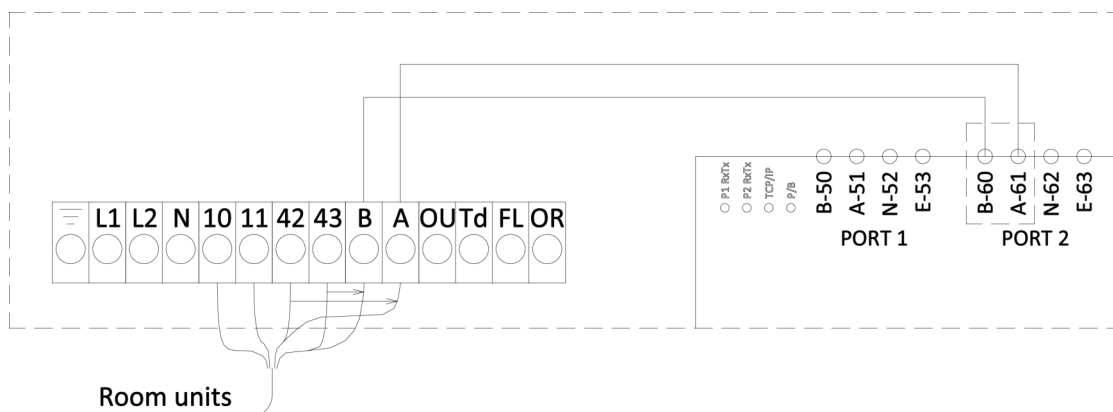


- Units without TCP/IP port can not run software beyond 1.3.
- If the unit currently runs software version 1.2 or earlier, two cables in the heating unit need to be moved as below.
- If the room units is showing XXXX after the update: Move cables as below.

Cable in terminal 42 is moved to terminal A (also used for communication with slave heating units)

Cable in terminal 43 is moved to terminal B (also used for communication with slave heating units)



Take note of the system parameter settings:

When updating the software the unit is restored to factory default settings. Take note of the settings for the parameters in the service menu.

The “H-parameters” are the most important to save.

If you are connected to the Leganet internet service you can do this by making screen shots of the different pages.

Screen shot from Leganet:

LEGALETT

LEGAnet

Hem

Inloggad som Gabriel

Lillared 1:24, Kungsbacka

4015-X, 4st

Översikt

Aggregat

Inställningar

Avancerat, Globala

Avancerat, Lokala

Förbrukning

Alarms

Logg

Tillbaka

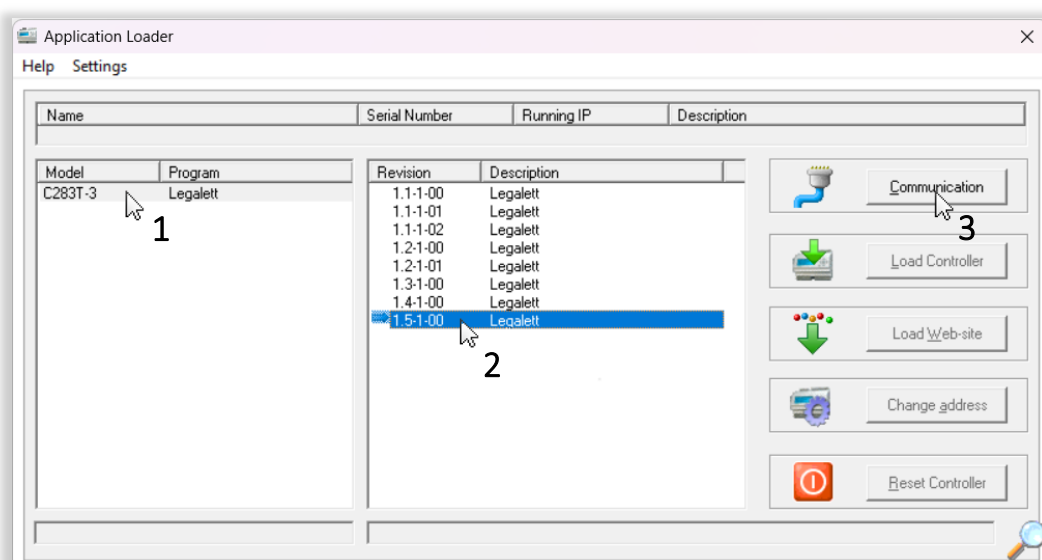
Inställningar, Globala

Parameter	Beskrivning	Värde	Fabriksinställning
I03	Utgivare ansluten till vilket aggregat	1	1
I04	Givare för extern värmekälla ansluten till vilket aggregat	1	1
I05	Ext. Värmekälla, Lagsta temp för drift	40 °C	40 °C
I06	Ext. Värmekälla, Högsta temp för drift	110 °C	110 °C
I07	Ext. Värmekälla, Hysteres högsta temp till återstart	40 °C	40 °C
I08	Ventilmotion	På	På
I09	Ventilmotion, Öppningstid för ventil	5 min	5 min
I10	By-Pass (vattenkrets)	På	På
I11	By-Pass, Öppningsgrad för ventil	10 %	10 %
I15	Regulatorns P-värde	20	20
I16	Regulatorns I-tid	1 dygn	1 dygn
H01	Värmare 1 styrs av rumsenhet	1	1
H02	Värmare 2 styrs av rumsenhet	2	2
H03	Värmare 3 styrs av rumsenhet	3	3
H04	Värmare 4 styrs av rumsenhet	3	4
H05	Värmare 5 styrs av rumsenhet	5	5
H06	Värmare 6 styrs av rumsenhet	6	6
H07	Värmare 7 styrs av rumsenhet	7	7
H08	Värmare 8 styrs av rumsenhet	7	8
H09	Värmare 9 styrs av rumsenhet	9	9
H10	Värmare 10 styrs av rumsenhet	9	10
H11	Värmare 11 styrs av rumsenhet	10	11
H12	Värmare 12 styrs av rumsenhet	11	12
H13	Värmare 13 styrs av rumsenhet	13	13
H14	Värmare 14 styrs av rumsenhet	14	14
H15	Värmare 15 styrs av rumsenhet	0	15
H16	Värmare 16 styrs av rumsenhet	15	16

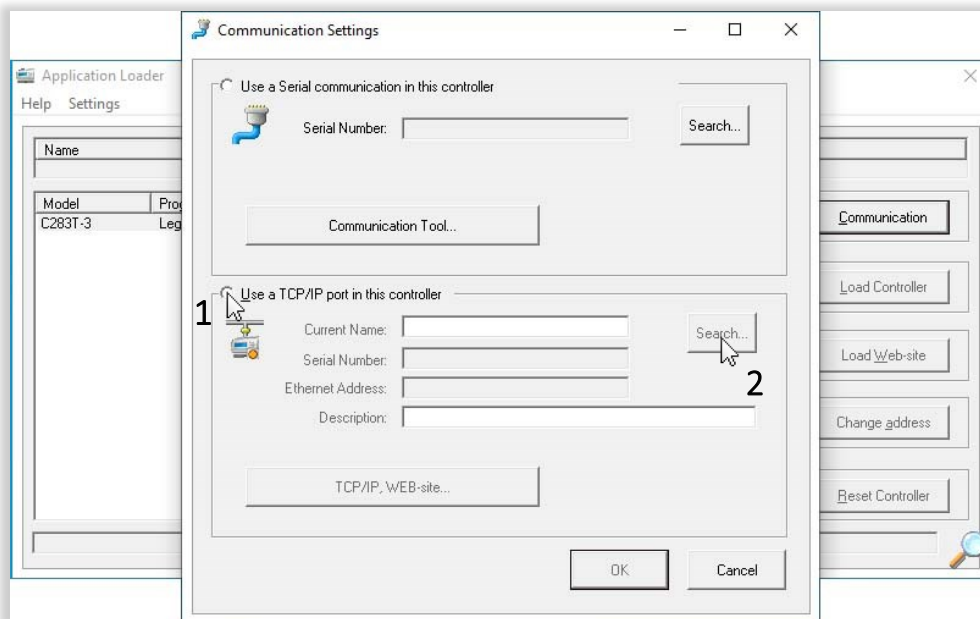
PC-application:

Us a Windows-pc

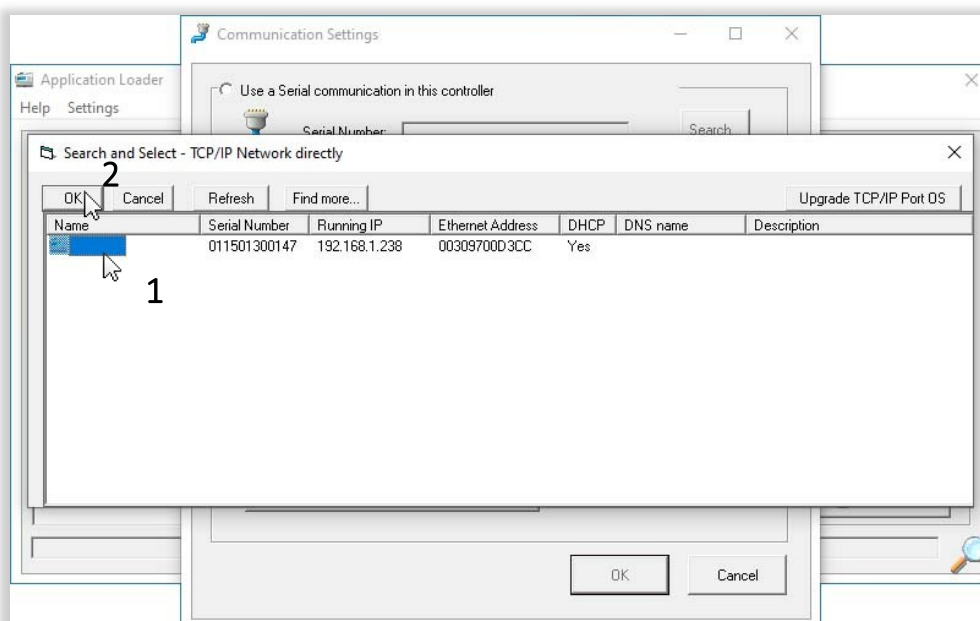
1. Run "Application Loader Legalett 1.5-1-00 build 88.exe"
Follow the instructions to install the Application loader.
2. Run Application Loader.exe
This will start the application loader. If there isn't any icon for the loader on the desk top, write "applic...." in the search window and it will show up.
3. Connect the master unit.
Use a regular ethernet cable between the heating unit TCP/IP port and the LAN-router or PC.
If a router is used, the PC must be connected to the same router.
4. Select the options in the Application Loader window according to the picture below and press "Communication"
Select 1.5-1-00 (pil 2).



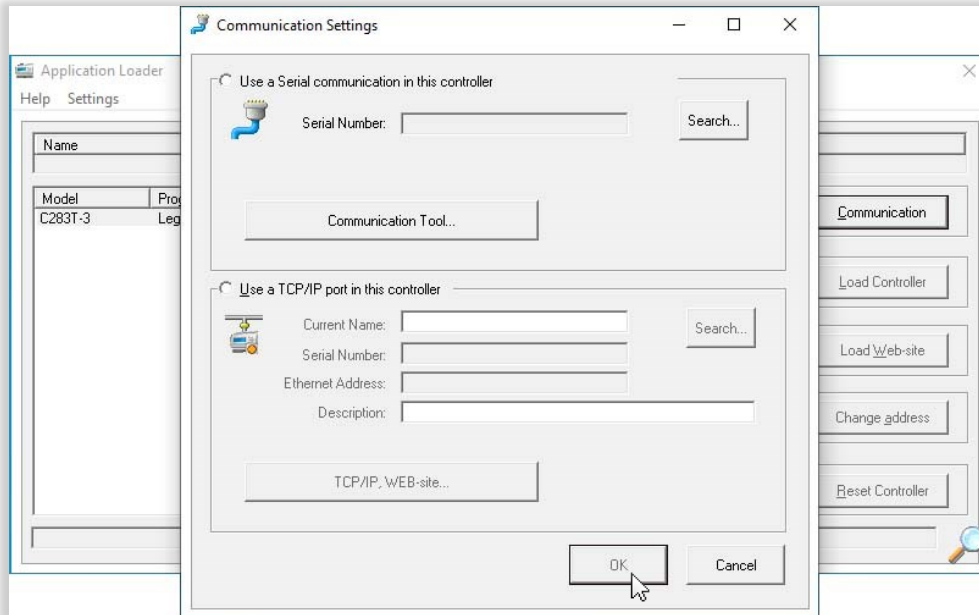
6. Select "Use a TCP/IP port in the controller", then press "Search"



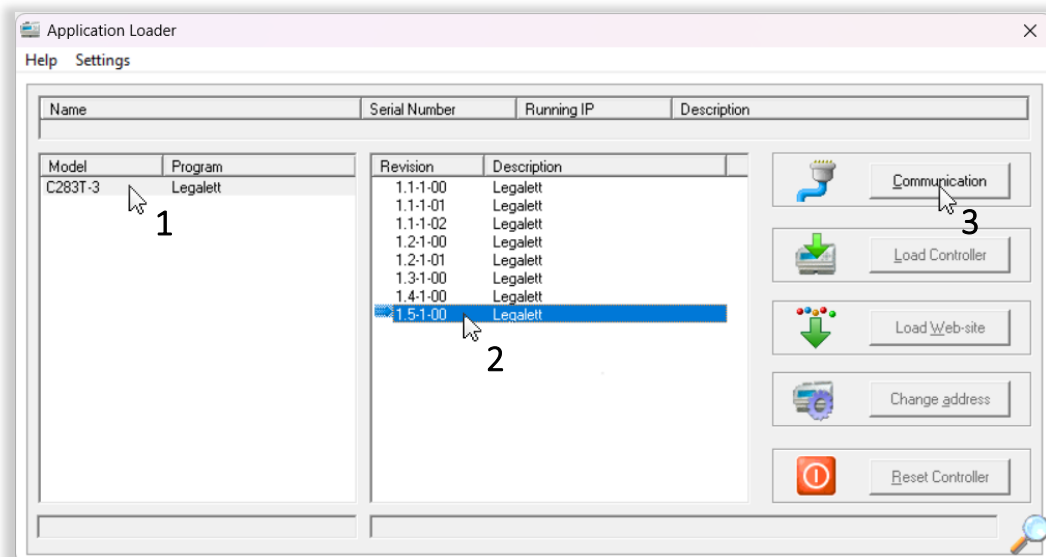
7. The control unit appears in the next window.
Select it and press "OK"



8. The picture below is showing the control unit serial number "011501300147" (example). This serial number is required to connect the unit to the Leganet internet service, if so desired. Take note!
9. Press "OK"

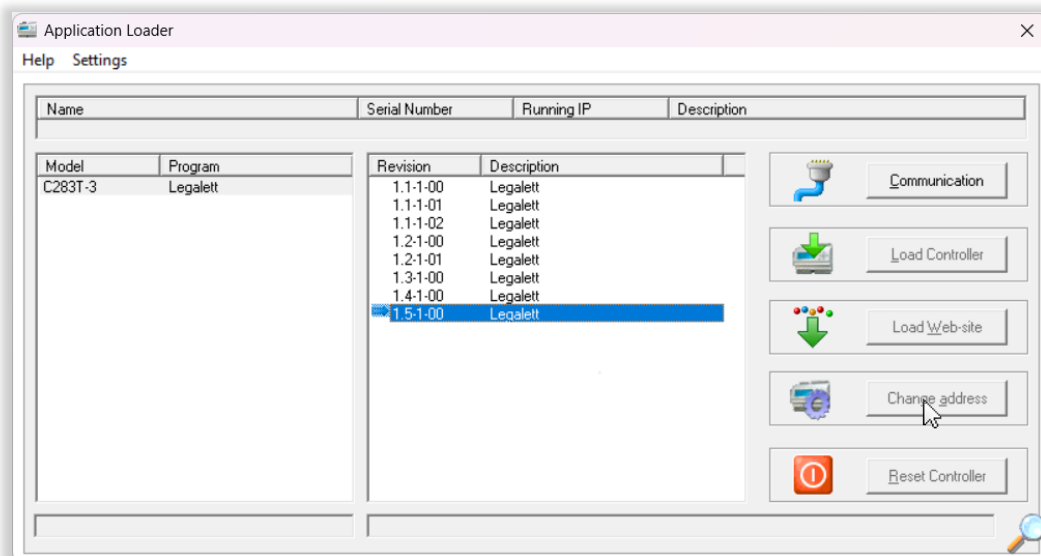


10. Press "Load Controller"
- The new software will now be loaded into the controller. Depending on how old the previous software, the operating system may also be updated. Press "OK" for this.



11. The controller is now updated! If more units (slaves) are connected to the now updated master, continue to step 12. Otherwise, the Application Loader can now be closed. The configuration of the heating system is reset to factory values. The "H-parameters in the service menu needs to be configured again according to the system design drawing. See the manual for the heating system. **ATTENTION! DO NOT, UNDER ANY CIRCUMSTANCES** run the command "RST" in the service menu.

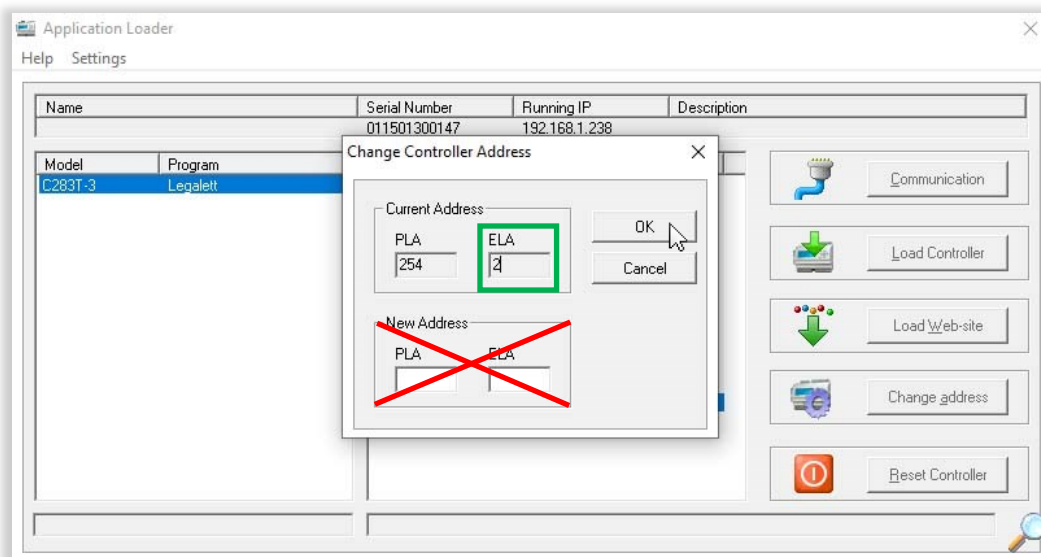
12. Repeat step 6-9. The ethernet cable must still be connected to the master unit.
13. Press "Change address"



14. Change the ELA-address

The ELA address specifies which unit the software is to be loaded to.

1 is the master, which is already finished. 2-5 are the slaves. Write the number of the unit that is up next in the ELA field and press "OK".



15. Return to step 10 "Load Controller"

The slave units will take significantly longer time to update compared to the master unit.